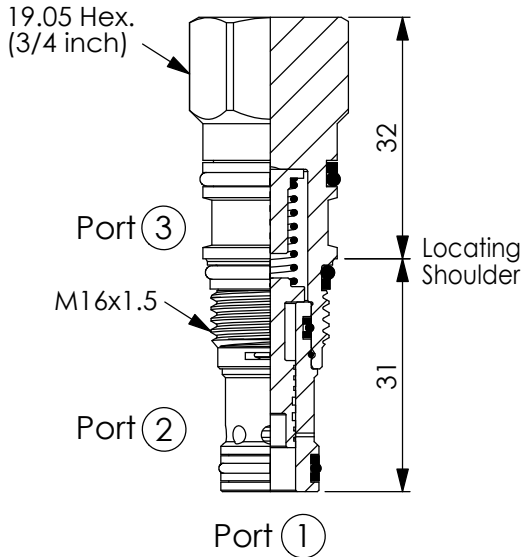
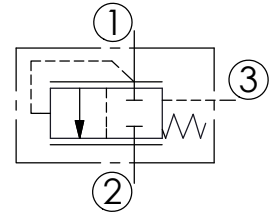
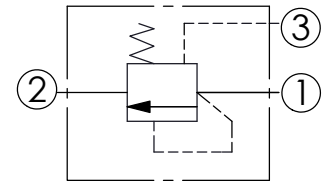


Ordering Code: **LR-163A-X-Y-Z**

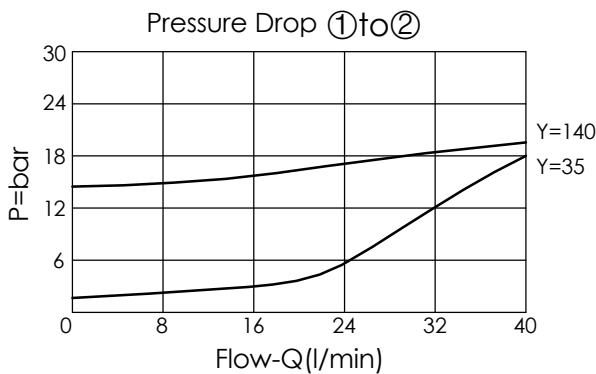


UNIT:mm



### TECHNICAL DATA

Max. pressure:	350	bar
Rated flow:	30	l/min
Cavity-Tooling:	163A-3	
Installation torque:	27-33	Nm
Weight:	0.09	kg



### X OPERATION

**30** External Pilot (bypass compensator)

**Y**

### SPRINGS

Cracking pressure

**35** 3.5 bar

**70** 7.0 bar

**140** 14.0 bar

**Z**

### OPTION

**N**

Non-adjustable