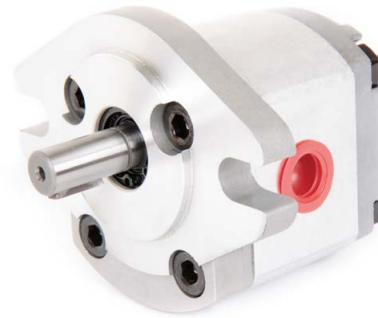
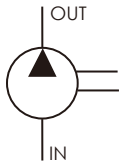


HGP-1A

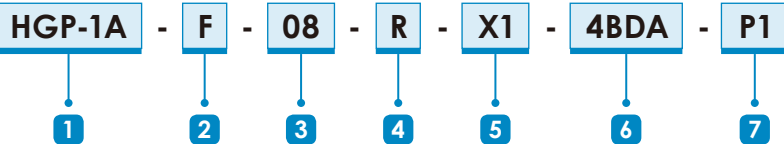
- ▶ Displacement : 0.5~7.8 cc/rev
- ▶ Max. Pressure : 250 kgf/cm²
(3500psi)
- ▶ Flange : SAE 2-bolt, DIN 4-bolt,
European 4-bolt



SCHEMATIC SYMBOL



ORDER CODES



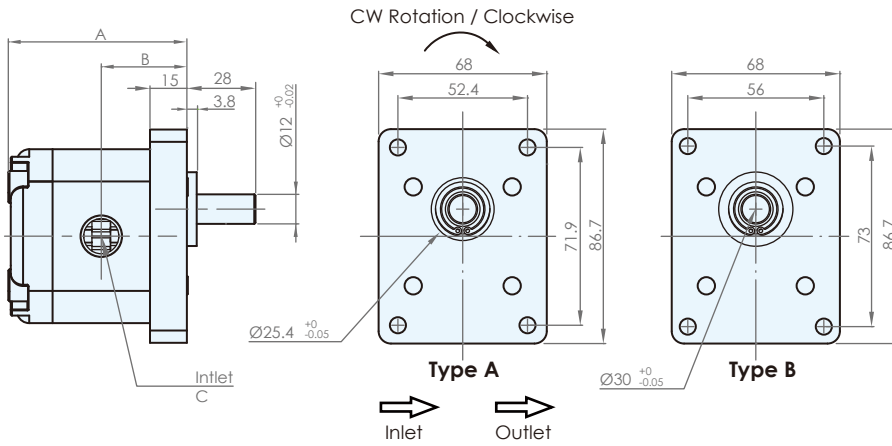
1 Model Name	HGP-1A	
2 Mounting	F	flange type
	L	foot type
3 Delivery Capacity	05, 08, 1, 2, 26, 3, 4, 5, 6, 8	
4 Rotation Direction	R	clockwise
	L	counter - clockwise
	M	hydraulic motor *
5 Shaft Type *	X: straight shaft Y: spline shaft Z: taper shaft	
6 Flange Mounting Type	2B	SAE 2-bolt
	4BDA	DIN 4-bolt (Type A)
	4BDB	DIN 4-bolt (Type B)
	4BE	European 4-bolt
7 Inlet and Outlet *	F: flange type(F1~F2) P: PT(P1~P2)	G: G, BSP, PF(G1~G2) U: UNF(U1~U2)

* The dimension of shafts and inlet & outlet sizes please refer to Page 11.

* Please contact the local distributors to obtain the specifications of hydraulic motors.

DIMENSIONS (unit : mm)

HGP-1A-4BD

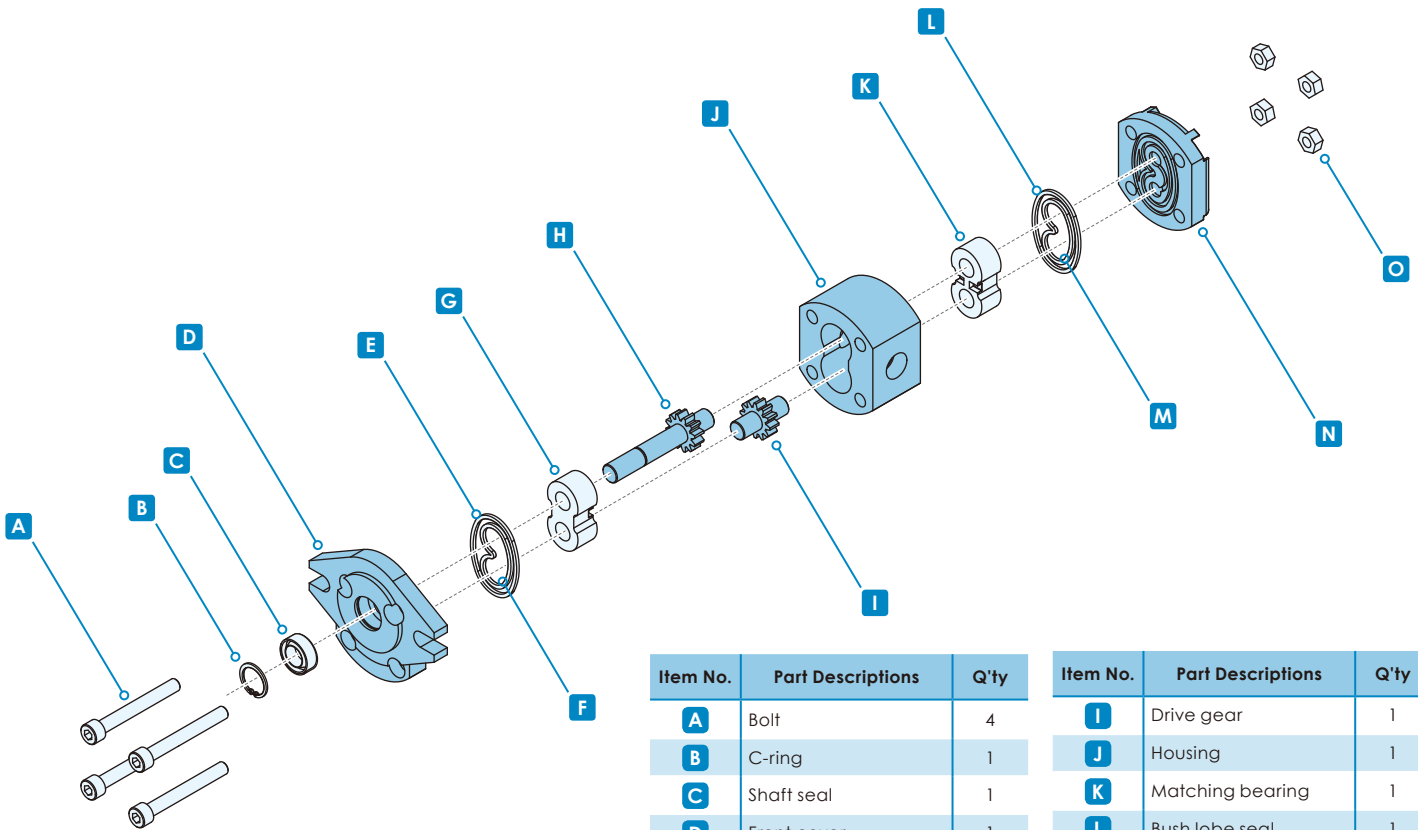


Model	A	B	C Inlet	D Outlet
HGP-1A-08	67.5	32.5	PT 3/8"	PT 3/8"
HGP-1A-1	69.5	33.5	PT 3/8"	PT 3/8"
HGP-1A-2	72	34.8	PT 3/8"	PT 3/8"
HGP-1A-3	77.5	37.5	PT 3/8"	PT 3/8"
HGP-1A-4	79.5	38.5	PT 3/8"	PT 3/8"
HGP-1A-5	82.5	40.5	PT 3/8"	PT 3/8"
HGP-1A-6	87.5	42.5	PT 3/8"	PT 3/8"
HGP-1A-8	93.5	45.5	PT 1/2"	PT 3/8"

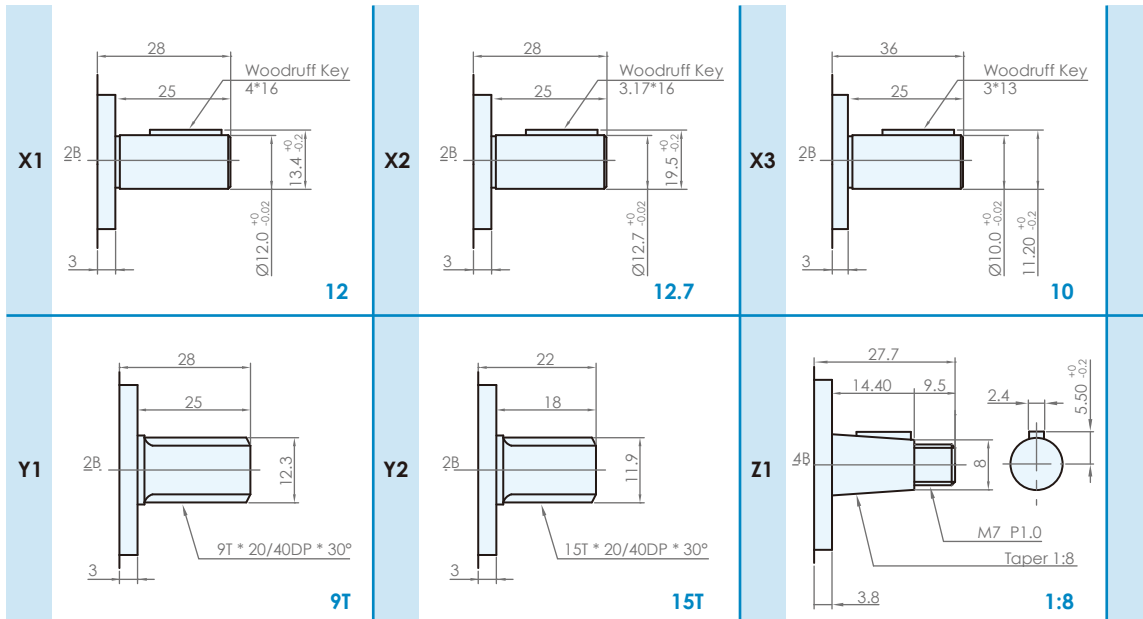
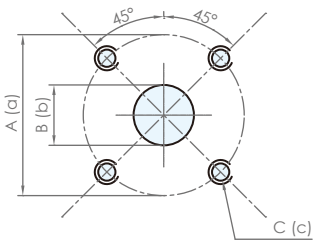
* Thread: NPT or PT is optional.

* If you want to order HGP-1A-05 or HGP-1A-26, please email us to get further information.

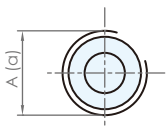
DECOMPOSITION CHARTS



Item No.	Part Descriptions	Q'ty	Item No.	Part Descriptions	Q'ty
A	Bolt	4	I	Drive gear	1
B	C-ring	1	J	Housing	1
C	Shaft seal	1	K	Matching bearing	1
D	Front cover	1	L	Bush lobe seal	1
E	O-ring	1	M	O-ring	1
F	Bush lobe seal	1	N	Rear cover	1
G	Matching bearing	1	O	Nut	4
H	Drive gear	1			

ADDITIONAL DIMENSION
Dimension of Shaft

Inlet and Outlet Size

Flange Type

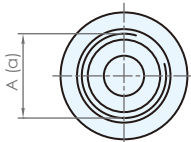
Code	Inlet			Outlet		
	A	B	C	a	b	c
F1	30	14.50	M6	30	14.50	M6
F2	35	14.50	M6	35	14.50	M6

G, BSP, PF


Code	Inlet	Outlet
	A	a
G1	G 3/8"	G 3/8"
G2	G 1/2"	G 3/8"

PT

Code	Inlet	Outlet	Applicable Model
	A	a	
P1	3/8" PT	3/8" PT	1A-08 ~ 6
P2	1/2" PT	3/8" PT	1A-8

UNF


Code	Inlet	Outlet
	A	a
U1	9/16"-18UNF	9/16"-18UNF
U2	3/4"-16UNF	9/16"-18UNF